



Photo By Kerry Krenzin

Beleeve Entertainment Presents

PENUMBRA

Starring Chelese Belmont, Shannan Leigh Reeve, Challen Cates,
Marnie Alton, & Michael Hanson

Written by Gino Costabile & Shannan Leigh Reeve

Website: www.PenumbraFilm.com

Twitter: [@PenumbraTheFilm](https://twitter.com/PenumbraTheFilm)

Press Contact: Chelese Belmont
323-696-0212,
chelese@BeleeveEntertainment

PENUMBRA

Directed by Shannan Leigh Reeve

USA - 2015 - English – Total Run Time: 123 minutes - Color/Stereo – 16:9 aspect ratio

HOOK: An addict has to survive addiction; everyone else has to survive the addict.

LOGLINE: The story of two addicts: a sober cop and a cocaine-loving artist, whose past history and addictions cause their lives to intersect. A tragic event will set both of them on a path that will challenge everything that they know and love.

SHORT SYNOPSIS: Erin Jacobs, a cocaine-loving artist living life by her own rules, and Valerie Carpenter, a beat cop struggling to remain sober while dealing with familial discord, find their lives uprooted by a shared past and a tragic event that sends both of them to the edge and demands that they reassess their priorities and their lives. When one of the protagonists enters rehab to deal with her demons, it causes a ripple effect on all those who love her.

LONG SYNOPSIS: Erin Jacobs (Chelese Belmont) is a street-smart cocaine addict living life by her own rules. She is a talented painter who has lost her drive to paint as her drive for the coke-induced high that she loves takes over. The film opens on Erin finishing the last of her cocaine when a knock on the door interrupts her solo party. She flippantly answers a line of questions about a noise complaint that two officers throw her way before getting off with a warning.

Later that day, as Erin is heading to a party at her friend Keith's (Nick Jandl, *Nashville*), she notices one of the cops following her, but manages to lose the tail. After a night of drugs, booze, and sex, she arranges some work at the leather shop that intermittently employs her. Her boss, Elizabeth (Marnie Alton, *Exes & Ohs*), is a successful musician and jewelry designer who has found the perfect balance between her success and her own addictions, and warns that Erin better do the same.

As Erin is replenishing her stash the next day, the cop who tailed her, Valerie (Shannan Leigh Reeve, *Cross*), busts Erin. The two engage in a heated exchange, during which we learn that Val and Erin have a past history. We subsequently learn that Valerie has been in AA for three years, and as she continues to fight her own personal demons, her husband, Jeff, becomes less patient with her growing obsession with Erin.

In the meantime, Elizabeth invites Erin to a party, where a high society patroness of the arts, Arielle Casati (Danielle Rayne, *Switched at Birth*) commissions Erin to paint. Erin seems to be on the fast track to success, but an unforeseen event will bring everything to a halt. At the same time, Valerie and Jeff's marriage hits the rocks and tempts Valerie to toss sobriety aside for the familiar comfort of the bottle.

As Erin reels from tragedy, she musters the fleeting strength to go to rehab, where she meets a tough-as-nails, but genuinely caring counselor, Dr. Corrie Richardson (Challen Cates, *Big Time Rush*), and a fellow patient, Huck (Michael Hanson, *Vampires Suck*), who try to convince Erin that sobriety is a far better choice than the path she's been on. Valerie, meanwhile, returns to AA and tries to mend old wounds with Jeff.

After a complicated family therapy session and 90 days of group meetings and therapy sessions, Erin emerges from rehab, but will it stick or will she be right back to her old friends and her old ways as soon as life gets tough? And will returning to meetings and focusing on herself give Valerie the balance that she needs to avoid temptation, or will she go back down the rabbit hole, sacrificing her marriage and family in the process?

Images: All images seen in this press kit are available. Please contact chelese@beleeveentertainment.com for high-resolution.JPG files.



Marnie Alton (Elizabeth) & Chelese Belmont (Erin)



Timothy Landfield (Bruce) & Kitty Swink (Carol)



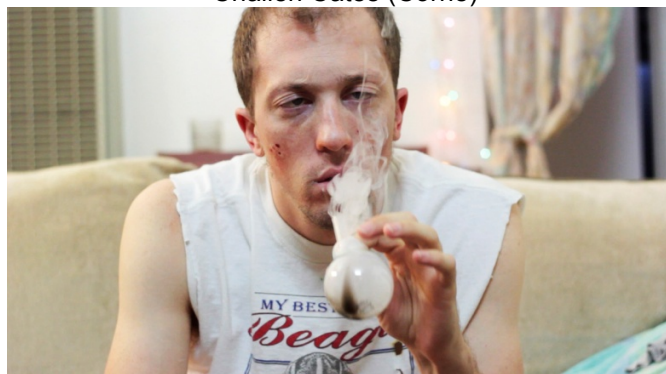
Shannan Leigh Reeve (Val) & Preston Thomas (Liam)



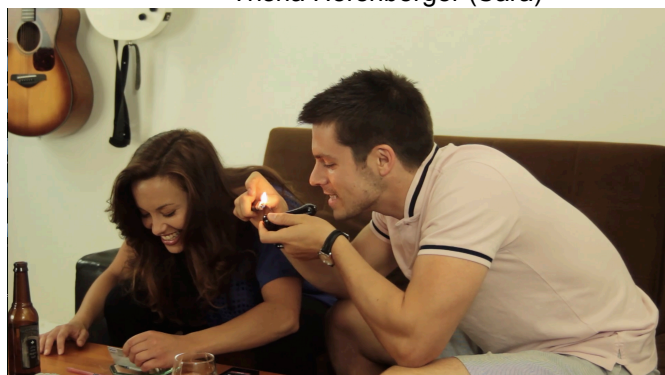
Challen Cates (Corrie)



Dylan Seaton (Charlie), Rahvaunia (Dominique),
Trisha Hershberger (Sara)



Kyle Bryan Hall (Toby)



Nicole Pacent (Beth) & Nick Jandl (Keith)



Nate Parker (Jeff) & Shannan Leigh Reeve

DIRECTOR'S STATEMENT

by Shannan Leigh Reeve

Penumbra was both a labor of love and a passion project. It started as a scene that Chelese Belmont wrote, but literally over night, it transformed from a scene to a short film. What we both quickly realized was that we had the beginnings of a universal story that hadn't been told from the perspective of those directly affected by a loved one's addiction. That's when we finished the outline and sent it off to Gino Costabile for the first writing pass. We knew that he was the perfect screenwriter for the job because he would bring a male perspective, as well as some humor and heart. We were talking about a very heavy topic and we knew that we were going to need some fun and laughter, or we'd eventually lose even the most dedicated audience.

We started filming in June of 2013 and wrapped principal photography in October of 2014, with our longest consecutive shoot lasting 4 days. While it was a non-traditional approach to filmmaking, it gave us flexibility to cast the actors we wanted, and take breaks to incrementally raise funds. The benefit of shooting location by location was that I was able to take the time to focus intently on the scene at hand, as well as to work on the initial edit during the breaks between filming. It also provided the opportunity to fine tune each character once the actor or actress had been cast, and allowed us the space to do a final rewrite before we went to set.

The more we spoke about the project throughout the production, the more affirmation we received. We clearly had struck a chord that many people had experience with. There were actors who bravely shared their own personal struggles with addiction in both the audition room and in emails. The subsequent outpouring of support we received during our crowd funding campaign was overwhelming, as more people continued to share their stories with us. We knew we had an audience, and we knew we owed it to them to be honest and to represent the stories of those who had previously felt voiceless about this stigmatized issue.

For the direction of the film, I felt it was imperative to showcase the temptations of Erin's world. Erin's addiction isn't just solely about the substances; her addiction is entertainment, it's social, it's emotional, and it's her safety blanket, all of which make it really hard for her to quit. Elizabeth is not only an example of what Erin could have and could be, but to Erin, she's the only person who really understands her. She doesn't criticize Erin, but rather enables her in every way.

Of all of the addicts whom I've spoken with over the years, most can all recall what got them hooked in the first place, but they often cannot recall every single one of the effects that their actions had on anyone other than themselves. For me, *Penumbra* was a way to bring light to a topic that is heavily shrouded in shame, while also engaging the audience in an entertaining medium. The ending was particularly important to both the producer and me; from the moment we finished the outline for the feature, we knew the only way that the film could end. We wanted to be truthful to the end, and I believe we were able to see that to fruition. If *Penumbra* helps even one addict to realize that there's help, or one family member of an addict to realize that he or she is not alone, then we'll have accomplished something that is bigger than ourselves.

PRODUCER'S STATEMENT

by Chelese Belmont

Two and a half years ago, I was sitting at dinner with a writer/director colleague lamenting that I was tired of being cast as the girlfriend/love interest/horror victims. Of course I'm grateful for work, but I wanted to dig into something different. Fired up after a good night of conversation, I went home that night, flipped open my laptop, and wrote a four-paragraph outline for a short. What came out of those four paragraphs is *Penumbra*, and what a ride it has been.

Funnily enough, I always identified more with Valerie than with Erin, and every single person who read the script assumed that Val was my role. The outline was really written from Val's perspective with regard to her guilt and need to save Erin. I had very recently had a family member die of complications from a life of drug use and much of Val's sentiment comes from feelings that I wrestled with after his death. It was because of that struggle that I wanted to embody Erin instead. I wanted to work to understand the other side of addiction- not the family member affected by the addict, but rather the person in addiction's grasp. After finishing the outline, I started reading testaments of what it felt like to be on drugs, and watched more "Intervention" and "Celebrity Rehab" and movies on drugs than I should admit. I spent weeks immersing myself in something that I had to understand in order to do Erin and Valerie justice. I then spoke to other people who have addicts in their lives. Erin's life events come from those sources. Shannan then brought her perspective to the various characters -- her background in Psychology and her own sources, some of whom are therapists and nurses, in addition to her own experience with a family death caused by drug use, proved to be invaluable in the development phase, and this is how the outline grew. When screenwriter Gino Costabile got a hold of the story, it blossomed.

As we started throwing around casting ideas, those actors informed the characters even more. Every single character gained vital aspects of his or her personality from the actor whom we chose to play him or her. The voices became more distinct, the back stories more involved. As they did, Erin and Valerie as characters grew too. These people are so real to us now. We know how they would respond, and what they would or wouldn't do in a situation. In this way, we fine tuned the script-- the full feature script. My little outline for a short grew and with it grew a cast and a crew who were committed to helping me actualize this dream-- who brought their passion and their insights and their own obsessive research. Marnie Alton spent nights watching episodes of "Intervention" that I mentioned; Kyle got in touch with an actor who played a very famous meth dealer on television; D'Neka attended Al-Anon meetings so as to better understand what that experience entails; Challen spoke to therapists, doctors, and addicts in order to gain insight and empathy. These people feel as strongly as I do. They showed up, gave their all, and supported this project from the moment I uttered its name. It makes me emotional just thinking about it because for me, this is what filmmaking is all about: the dedication to this film is indescribable, and my gratitude even more so.

Penumbra was incredibly fulfilling for those of us involved. In the midst of the challenging subject matter, we found incredible moments of laughter, connection, and realization. We are hopeful that this will translate to the screen so that you too can take a journey while watching it, just as we took one while creating it. We hope that it will touch you, speak to you, scare you, invigorate you. We truly gave it our all. We were up at all hours of the night prepping props and figuring out schedules and rewriting the scenes to make them the best that they could be. We called in every favor we had, and had only our gumption and our script to convince people to get on board. And they did, willingly, passionately, intensely. We also listened to every single person who offered us an anecdote, a piece of advice, a criticism, a hope, and then shaped all of this into a passion project, the magnitude of which has truly changed my artistic direction.

PRODUCTION NOTES

- Penumbra is the first feature-length film directed by Shannan Leigh Reeve, and produced by Beleeve Entertainment.
- Penumbra's speaking cast was 59% female (23 out of 39); the crew was 72% female (31 positions out of 43), including women in the director, assistant directors, co-writer, editor, producer, and DP positions.
- The film was selected as Indiewire's Project of the Day on February 16, 2015, and went on to win Project of the Week on February 23rd.
- Production officially started on June 11, 2013 and wrapped in October of 2014, though filming only took 17 days in total. The filmmakers took a break between the two rounds of filming to raise the funds necessary to film in the locations that served as the rehab facility and to lock key cast, including the roles of Corrie, Bruce, and Carol.
- The film was partially funded thanks to a successful campaign on IndieGogo in July-September of 2014. Chelese & Shannan managed to raise \$13,000 to finish filming and post production.
- The "drugs" used in the movie included: inositol as cocaine, herbal tobacco as marijuana, rock candy combined with vapor from an e-cigarette as crystal meth, and a sugar/vegetable oil mixture combined with e-cigarette vapor when Erin freebases. Although the inositol substitute is safe, Chelese Belmont had to snort it so frequently that she had nose bleeds twice during filming.
- Filming locations included friends' and the producers' apartments and homes in North Hollywood, Hollywood, Culver City, and Gilroy, CA. Additional filming took place in rented locations in downtown LA and San Marcos, California, in addition to an actual therapy office in Santa Monica.
- Cast/Crew members Chelese Belmont, Shannan Leigh Reeve, Kim Leblanc, Danielle Rayne, Preston Thomas, Ashley Love, and Lori Dean all worked at Universal Studios Hollywood prior to filming Penumbra.
- Chelese Belmont's parents and Terasa Sciortino's mother have cameos in Val's AA meeting.
- The part of Carol was specifically written with Kitty Swink in mind after she worked with Shannan Leigh Reeve on Nancylee Myatt's reboot pilot, *Nikki and Nora*, in New Orleans in 2013.
- This is Nate Parker's ("Jeff") only film appearance. He was a theatre actor for many years, and appeared in national tours, but is now an accountant in real life. He was cast because of his long-time friendship and therefore chemistry with Shannan Leigh Reeve, who plays his wife.
- Five artists lent their work to Penumbra. Alexandra Vino lent her paintings to be featured as her character's in the film. Michelle Rose (Mamasita) painted all of Erin's pieces, while Massi Penate created Erin's sketchbook.

WHAT IS A PENUMBRA?

This is the most common question posed when we discuss the film. “Where did the title come from?” they ask. “What is the definition and how did you come to it? I meant to look it up, but haven’t gotten around to it, so tell me, what does it mean?!” Originally the film was named something else-- something more literal-- but then Chelese was teaching an SAT class and stumbled upon a word that seemed to describe many of the characters in the film:

Penumbra.

An area in which something exists to a lesser or uncertain degree.

Or

An outlying surrounding region; a periphery.

Or

A region in which only a portion of the light source is obscured.

To us, this became the perfect description of the characters in our film. Many of them are the fringe of society. They exist on the outer limits or periphery, to an uncertain degree because of their various demons. Erin expresses this sentiment when Valerie busts her during a drug deal, and this is what stuck with us as we named the film. It symbolizes Valerie’s fight with alcoholism even as she tries to maintain her place on the police force; it describes Elizabeth’s underlying demons in the face of success, and Keith’s unrelenting needs despite his plush life. It illustrates Huck’s revelation of his darkest moment, and Corrie’s endless drive to make an impact on the “penumbras” with whom she works-- to shed light where shadow has typically reigned. It is the ideal expression, as Erin exclaims, for all those who have something to hide from acceptable society, and it is why we have named our film this obscure, yet perfect word.

“ONLY THE MOST OBSERVANT WILL NOTICE
WHEN A PENUMBRAL MOON
PASSES THROUGH THE EARTH’S OUTER
SHADOW...

... I LIKE THE IDEA OF THINGS
DANCING IN THE SHADOWS”



- ERIN JACOBS
#PenumbraFilm

A Q&A With Producer Chelese Belmont by Synergomatique:

What's the most important message that your film conveys about the world we live in?/ How does your film distinguish itself from other films addressing the same themes?

Addiction is unbiased, ubiquitous, and often deadly, and we aim to show the struggle that many endure while trying to break free of its grasp. Drug use is fairly regularly depicted in films and on television, but the effect that addiction has on the family and friends is something that we felt was lacking in film.

What are the film's main concepts and themes? The most significant elements of Penumbra are the effects of addiction on the addict and those who love the addict. So many people who have read the script have noted how it struck a chord with them-- whether because of their own personal struggles, or the struggles of those they loved. As we auditioned for some of the roles in the film, numerous actors came into the room and shared how the script resonated with them.

In addition, one of the defining elements of Beleeve is that it is a film company created and run by two women, and one of the key elements of Penumbra is that it filled with strong female characters, all of whom struggle with, and many of whom overcome the various challenges in their lives. Women are on the screen for the vast majority of the film, influencing the events, and playing key roles in all of the characters' lives.

What or who inspired you to become independent filmmakers? We both found our way behind the camera while working in front of it. Many casting directors, agents, and managers now encourage actors to create their own work, and both of us were willing to learn and jump in where needed. By doing so, we began to hone our skills and upon meeting each other, we knew that we shared a sense of quality and a passion for storytelling that led us to form Beleeve and tell stories that explore taboo subjects or give voices to the voiceless.



Director/Producer Shannan Leigh Reeve



Producer Chelese Belmont

CAST BIOS

CHELESE BELMONT

Erin Jacobs

Chelese Belmont grew up dancing competitively and performing in traveling singing shows and children's musical theatre. While attending UC Berkeley, she took acting classes through the Theatre Department and at The American Conservatory Theatre (ACT) in San Francisco. Upon graduating with Honors in three years, Chelese began working on student and independent films in the Bay Area. She was then accepted into the Actors Studio Drama School in New York City and completed a three-year Masters of Fine Arts program in Acting. On her summer breaks during graduate school, she continued to shoot feature films, including the action film "Three Bad Men," the coming-of-age story "Cairefield," and the horror film "Cider Springs Slaughter." She next moved to Los Angeles to continue to pursue her film career, and has been busy with roles in theatre, film, television, voice over, and commercials. She also co-owns Beleeve Entertainment with Shannan Leigh Reeve.

SHANNAN LEIGH REEVE

Valerie Carpenter

Shannan Leigh Reeve was born into a military family and spent most of her life moving from city to city. In college, Shannan double-majored in Psychology and Theatre. At the Denver Center Theatre Co., she won an Irene Ryan Nomination for her portrayal of Lucy in *The Rivals*. She eventually left school to accept a contract to play Helen in the *Waterworld Stunt Show* in Osaka, Japan. Later, in New York City, Shannan performed in the NY Fringe Festival, and helped develop a new work under the direction of Greg Mullavey. NYC is where Shannan started to shift her focus from theatre to film, working on several independent features and student films, including "Descent" with Rosario Dawson. Upon moving to Los Angeles, Shannan has been a series regular in both seasons of the Tello Films webseries "Cowgirl Up," three seasons of "Entangled with You," and the popular cross-media production, "I Hate Tommy Finch." Shannan was also in the Sony Pictures film "Cross," and a number of short films including the award-winning film "Quiet."

CHALLEN CATES

Dr. Corrie Richardson

Known for her role as TV's favorite mom on Nickelodeon's # 1 live-action musical-comedy, "Big Time Rush," Challen Cates starred as the cool "Jennifer Knight," mother to the hockey-playing, reluctant boy band member Kendall, and his younger sister Katie. With a series run of over four successful seasons, in addition to several films (most notably "Big Time Movie"), "Big Time Rush" remains one of the top-rated shows on Nickelodeon. Challen has also appeared in guest star and recurring roles on numerous television series including, "The Night Shift," "NCIS," "Criminal Minds," "CSI: NY," "Missing," "Desperate Housewives," and "Monk." Recent film credits include, Seth, MacFarlane's "A Million Ways To Die In The West," "Chasing the Devil," "Pups United," "Sensitivity Training," and "Footsteps." Challen enjoys doing as many theatre performances as possible and recently starred in *Is There Sex After Marriage*, one of LA's most successful stage plays.

MARNIE ALTON

Elizabeth

Marnie Alton was born in Edmonton, Alberta, Canada. She is a musician and actress who is best known for her work as the character Sam on the Logo series "Exes and Ohs." She has also appeared in two movies with Jean-Claude Van Damme, "In Hell," and "Replicant." In addition to a number of guest and co-star roles, Marnie was also a series regular on the television series "Hot Hot Los Angeles," and in two notable webseries for Tello Films, "Cowgirl Up," and "Hashtag: The Series."

(cast bios continued on page 10)

MICHAEL HANSON

Huck

Michael Hanson is a graduate of UCLA's School of Theatre, Film, and Television and has been consistently appearing on stages around Los Angeles since 2008, most recently in *Nice Things* at Rogue Machine, *Melville Boys* at Little Fish Theatre, *The Laramie Project: 10 Years Later* at the LA Gay and Lesbian Center, and *SubUrbia* at Pacific Resident Theatre. Michael's film and television credits include "Marvel's Agent of S.H.I.E.L.D." (ABC), "Switched at Birth" (ABC Family), and "Vampires Suck" (20th Century Fox). He's also a freelance math tutor and co-founder of the sketch comedy group, "Burning Sensation." He dedicates his performance to M.F.- who shared with him the story of his own addiction and recovery. Michael hopes his work in "Penumbra" does some small justice to M.F.'s courage and generosity.

KITTY SWINK

Carol

Kitty Swink's recent features include "Diani & Devine Meet the Apocalypse", "I Am I," and "Hello, My Name is Frank." She's guested on dozens of television shows, recurred on "South of Nowhere," "For The People," and "Star Trek: Deep Space Nine." Kitty has also been in the digital series "Nikki & Nora," "Fumbling Thru the Pieces," and soon-to-be-seen "Red Bird." She regularly appears on stage in Los Angeles and in regional theatre around the country. Her home base is The Antaeus Theatre Company, where she has appeared in *Tonight at 8:30*, *The Autumn Garden*, *Macbeth*, *The Curse of Oedipus*, and *Picnic*.

TIMOTHY LANDFIELD

Bruce

Timothy Landfield has appeared on Broadway, film, and television. Television and film credits include "The Last Ship", "Rizolli and Isles", "Bones," "Numbers", "Six Feet Under," "Without a Trace," "Monk," "Frasier," "CSI," "Law & Order," and "The Cooler" with William H. Macy. Broadway credits include *Company*, *The Sound of Music*, *Rumors*, *Arsenic and Old Lace*, *Wild Honey*, *The Crucifer of Blood* and *Tartuffe*. Off-Broadway, he was in the original production of *Sister Mary Ignatius Explains It All for You* and *The Actor's Nightmare*. He has played major roles in regional theaters across the country, including Phileas Fogg in *80 Days* at La Jolla Playhouse. At South Coast Repertory Theatre, he's appeared in *A Christmas Carol*, *Eurydice*, *Noises Off*, *Bach at Leipzig*, *Pinocchio*, *The Clean House*, *The Norman Conquests: Round and Round the Garden* and *Hay Fever*. Tim is also on the faculty at The American Academy of Dramatic Arts in Hollywood where he teaches and directs.

ABOUT BELEEVE



Chelese Belmont and Shannan Leigh Reeve started Beleeve Entertainment in 2012 after they decided to combine their collective skill sets and equipment to pursue their filmmaking goals. Beleeve Entertainment was created with the goal of telling the stories that they believe in, whether that means by tackling subject matter like mental illness, addiction, or women's issues, or in order to give life to characters whose voices need to be heard. They have spent the past few years honing their skills by shooting short and feature films, promotional materials, live theater events, and music videos. Beleeve Entertainment recently partnered with Cambrian Film Studios to bring the short film, *The Red Haired Lady*, a film about Schizophrenia, to life last summer. *The Red Haired Lady* was an official selection of the Chelsea Film Festival in New York City in 2014. They are also working on two other shorts, and three additional features that are in various stages of development.

KEY CREW BIOS

ADRIANA TORRES

Director Of Photography

Adriana Torres is a Los Angeles-based Director of Photography who loves creating new content. Born the daughter of a professional photographer and artist, Adriana grew up in a supportive artistic environment. She had her first 35mm camera at age 10 and full dark room privileges by age 11. Adriana has shot several feature narratives, multiple comedy specials which have aired on MTV LOGO and SHOWTIME and award winning documentaries including "I Stand Corrected" and "Letter To Anita."

GINO COSTABILE

Co-Writer

Gino was born and raised in Connecticut. He developed an interest in film at an extremely young age, and once he discovered acting, he never looked back. He received his BFA in Acting from the University of Connecticut, then earned his MFA in Acting from The Actors Studio Drama School in New York. Gino performed in numerous productions all over both coasts, but in recent years, he's realized that putting words on a page can be just as fulfilling as saying them. He usually takes a much more science-fiction/ surrealistic approach to his works, but for *Penumbra*, he was more than happy to collaborate on a project with two of his closest friends. Gino currently lives in New York city after a brief stint in Los Angeles. He is still acting and is currently putting the finishing touches on two different feature film screenplays along with a few short films and a novel.

(crew bios continued on page 12)

MIKE HAMILTON

Camera Operator/Lighting Technician/Gaffer

Mike has been in the television and film industry for over 30 years. With a degree in journalism from the University of Miami Florida, Mike started working as a news reporter for Channel 13 in Miami. He moved from there to writing and shooting for the Discovery Channel's "Art Pinder's World of Adventure," which took him all over the world capturing images of some of the world's most awesome wildlife and breathtaking scenery. After doing videos for some of the biggest corporations like Blockbuster Video, Texaco, Popeye's Chicken and Best Buy, Mike moved to Los Angeles to work on more nationally syndicated shows like "Entertainment Tonight," "Access Hollywood," "Inside Edition," "A Current Affair," and "Extra!" In L.A. Mike has worked on "Dancing With The Stars," "American Idol" and "Extreme Makeover." Currently Mike is working with Golf Channel on "The David Feherty Show," "The Big Break," "Legends of Golf," "Golf Academy," and "Altered Course." He has won four Telly Awards for his work with the Golf Channel.

DANIEL CLIVE MCCALLUM

Composer

Daniel Clive McCallum is a composer for film, television, theatre and concert music. Having studied performance & composition at the Sydney Conservatorium of Music High School and later furthering his studies in composition at the prestigious Royal Academy of Music in London with the generous assistance of the ABRSM scholarship, Daniel acquired a strong foundation of musical skills allowing him to work flexibly in various musical fields. He has written for many different events & occasions, resulting in several prominent commissions both national and internationally from such organizations as Ars Musica Australis, The Warringah City Council, Chronology Arts, The Royal Academy of Music, CHAOS, Choir & Organ Magazine (Cambridge) & Imagine a Spectacle Production, to name just a few. His music has been recorded and performed at numerous venues including the South Bank Center (London), Abbey Road Studios, and the Sydney Opera House. He also composed for the documentary, "Lovin in Limbo," and served as the orchestrator on "Nobody Wants the Night," in addition to offering additional music to a wide range of cinematic projects.

CAST

Erin Jacobs . . .	Chelese Belmont
Valerie Carpenter . . .	Shannan Leigh Reeve
Dr. Corrie Richardson . . .	Challen Cates
Elizabeth . . .	Marnie Alton
Huck . . .	Michael Hanson
Carol . . .	Kitty Swink
Bruce . . .	Timothy Landfield
Jeff Carpenter . . .	Nate Aylworth
Kate . . .	D'Neka Patten
Melina . . .	Kim Leblanc
Chris . . .	Terasa Sciortino
Toby . . .	Kyle Bryan Hall
Keith . . .	Nick Jandl
Beth . . .	Nicole Pacent
Doug . . .	Damian Desiree
Suzy . . .	Loren Lillian
Jackie . . .	Chelsea Pitillo
Arielle Casati . . .	Danielle Rayne
Kevin . . .	Adam Barr
Liam Govers . . .	Preston Thomas
Sara . . .	Trisha Hershberger
Abby . . .	Megan Kim
Dominique . . .	Rahvaunia
Charlie . . .	Dylan Seaton
Alexandra . . .	Alexandra Vino
Mamasita . . .	Michelle Rose
Dealer . . .	Dylan Powers
Detective Hamilton . . .	Treisa Gary
Mediator . . .	Bonnie deGrood
Joel Pierce . . .	Matthew Jayson
Terence . . .	Terence Curran
Korean Art Buyer . . .	Christy Choi
Female French Party Guest . . .	Lindsey J Roetzel
Male French Party Guest . . .	Dave Leon
Gus . . .	Gene Gabriel
AA Meeting Leader . . .	Rosanne Struthers
AA Meeting Attendee #1 . . .	Del Struthers
AA Meeting Attendee #3 . . .	Mariani Sauderlund
Dispatch Operator Voice . . .	Ashley Love

Crew

Director . . .	Shannan Leigh Reeve
Writers . . .	Gino Costabile Shannan Leigh Reeve
Producer . . .	Chelese Belmont
Associate Producers . . .	Karen O'Brien Annie Luck Mike & Kim Hamilton
Cinematographer . . .	Adriana Torres
Editor . . .	Shannan Leigh Reeve
Digital Effects . . .	Adriana Torres
Camera Operators . . .	Mike Hamilton Ken Whiting
1 st Assistant Director . . .	Chelese Belmont
2 nd Assistant Director . . .	Angela Barrett
Electrician/Gaffer/Lighting Tech. . .	Mike Hamilton
Grip. . .	Ken Whiting
Script Supervisor. . .	Lori Dean
Sound Mixers. . .	Doug C. Wilson Dylan Powers
Boom Operator. . .	Nicolle Whalen
Makeup . . .	Harmony Swink Vyvy Tran
Special Effects Makeup . . .	Jane Powers
Property Master. . .	Lisa Monroe
Locations Manager. . .	Chelese Belmont
Locations Supervisor. . .	Shannan Leigh Reeve
On-set Photography. . .	Nicolle Whalen
Still Photography . . .	Kerry Krenzin
Post-production Supervisor. . .	Chelese Belmont
Post-sound Supervisor/Sound re-recording. . .	Jason Abell
ADR Recordist. . .	Dylan Powers
Sound Effects Editor. . .	G.W. Pope III
Colorist . . .	Adriana Torres
Production Assistants . . .	Rachelle Struthers Kim Leblanc Ashley Love
Art Contributors. . .	
(Elizabeth's Apartment). . .	Kerry Krenzin
(Erin's Artwork). . .	Michelle Rose
(Casati Loft). . .	Alexandra Vino
(Therapy Office). . .	Ingrid Repetti
(Erin's Sketchbook). . .	Massi Penate